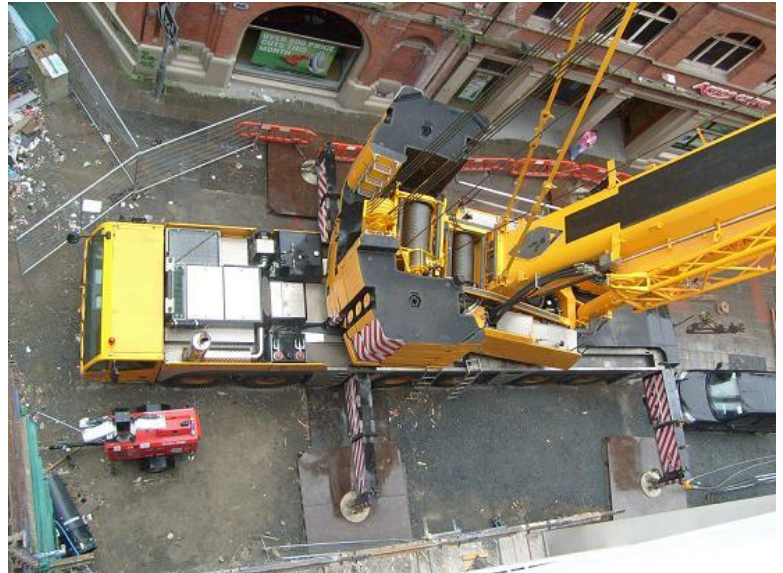




2007 Terex Demag AC350-1 €950,000

Capacity: 350mt
Boom Length: 56m
Jib Length: 18m
Counterweight: 142 ton
No. of Winches: 2
Engine: Mercedes
Drive: 8x12x12
Hours: 3,500hrs
Tires: 16s



Description:
71m luffing jib, 4 hookblocks, Superlift

* Contact us for Pricing *
Eddy Kitchen: 1-804-814-4844
eddy@kitchensequipment.com



Cranes/Platform Trailers/Gantries/Strand Jacks/Slide Systems/Rigger's Forklifts